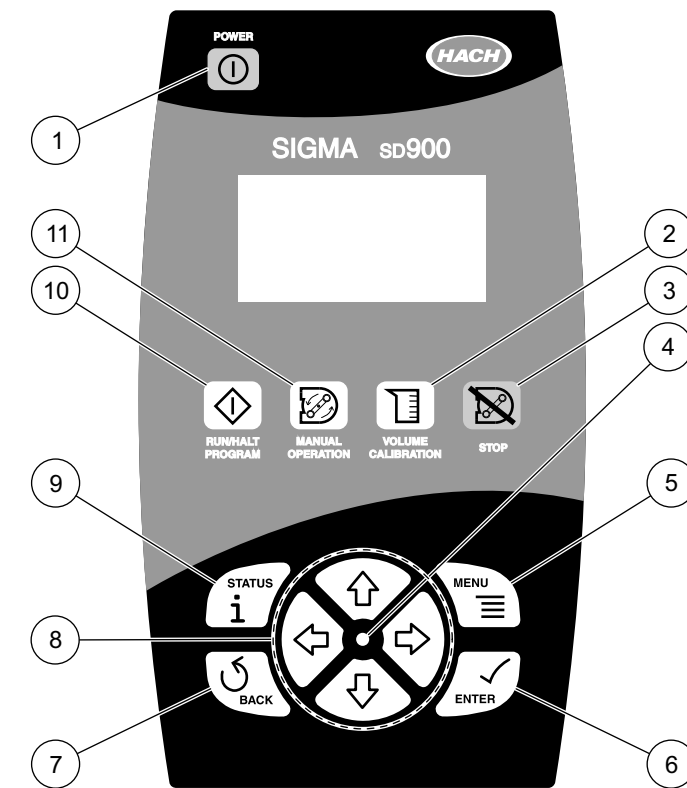


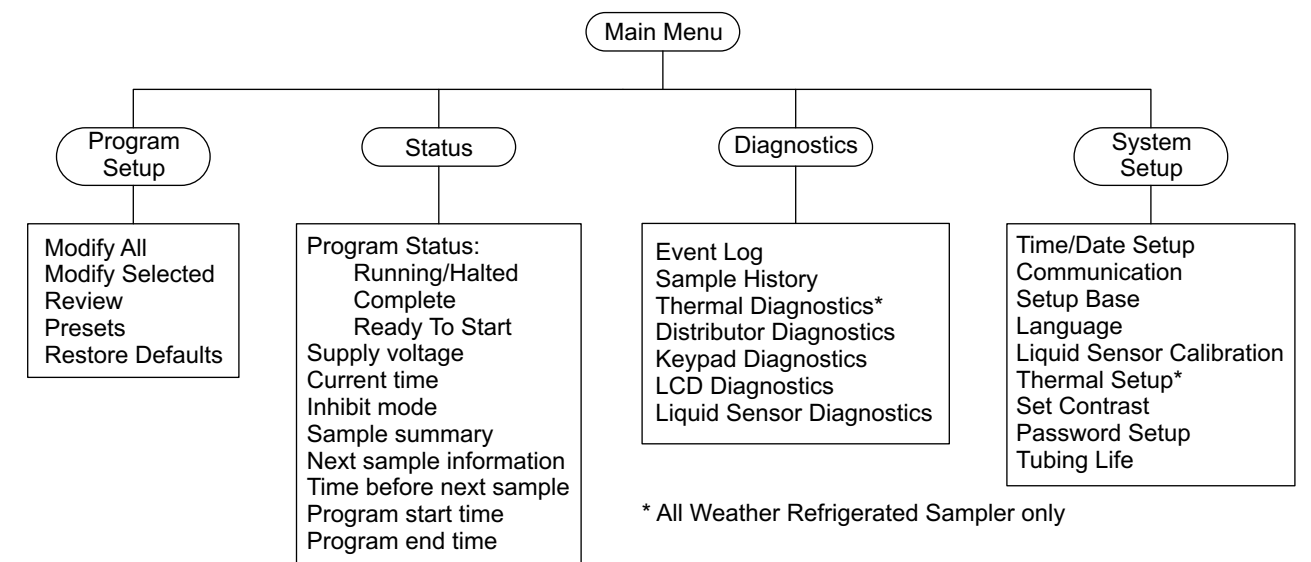
Problem	Cause	Solution
Instrument will not power on with AC power.	Problem may be with the controller, power supply or main power source.	Isolate components to determine which component has the problem.
	Problem with circuit breaker.	Check the circuit breaker for the main power.
	Problem with electrical outlet.	Check to see if the outlet is receiving power.
	Defective power supply.	Replace power supply or use a battery.
	Defective controller.	Contact the service center.
Instrument will not power on with DC power.	Battery is not charged.	Replace with a fully charged battery.
	Battery does not hold charge.	Replace battery or use an AC power supply.
	Defective controller.	Contact the service center.
Sampler will not create sufficient lift.	Strainer is not completely submerged.	Make sure the strainer is completely submerged.
	Intake tube has a leak.	Replace intake tube.
	Pump tube is worn.	Replace pump tube.
	Pump roller assembly is worn.	Contact the service center.
Inaccurate sample volumes.	Incorrect volume calibration.	Repeat the volume calibration and take a grab sample to verify accuracy.
	Incorrect intake tube length is programmed in the sampler.	Measure the intake tube length and enter in the program setup menu.
	Intake tube is not completely purging.	Make sure the intake tube is on a downward slope as vertical as possible, with no low points where liquid can accumulate.
	Strainer is intermittently submerged.	Install the shallow depth strainer (Cat. No. 2071 or 4652).
	Worn pump tubing and/or roller assembly.	Replace pump tubing; contact service center for roller assembly.
	When the liquid sensor is disabled, variable suction heads will cause variable sample volumes.	Enable the liquid sensor and complete a volume calibration.
	Liquid sensor is not functioning properly.	Calibrate the liquid sensor using the same liquid that is being sampled.
Message	Reason	Action
ERROR WRONG RANGE	The value that was entered is outside of the acceptable range.	Press BACK or ENTER . Enter a valid number that is within the range specified on the bottom of the screen.
NOT ALLOWED CANNOT ENABLE SETPOINT SAMPLING AND STORM WATER	An attempt was made to enable setpoint sampling and stormwater sampling at the same time.	Disable setpoint sampling or stormwater sampling, then enable the preferred option.
NOT PERMITTED. END THE PROGRAM FIRST TO ACCESS THIS FEATURE	An attempt was made to access a menu such as program setup, system setup, volume calibration or manual operation while a program was running.	Press BACK or ENTER and select END PROGRAM or CANCEL to continue the program.
NOT ALLOWED. 1 BTL CONFIGURED DISTRIBUTOR NOT RELEVANT.	An attempt was made to move the distributor when the program setup was set to a single bottle.	Change the bottle number configuration in the program setup menu before moving the distributor.
NOT ALLOWED. ENABLE LIQUID SENSOR TO PERFORM CAL	An attempt was made to calibrate the liquid sensor when the liquid sensor was disabled.	Enable the liquid sensor in the program setup menu.



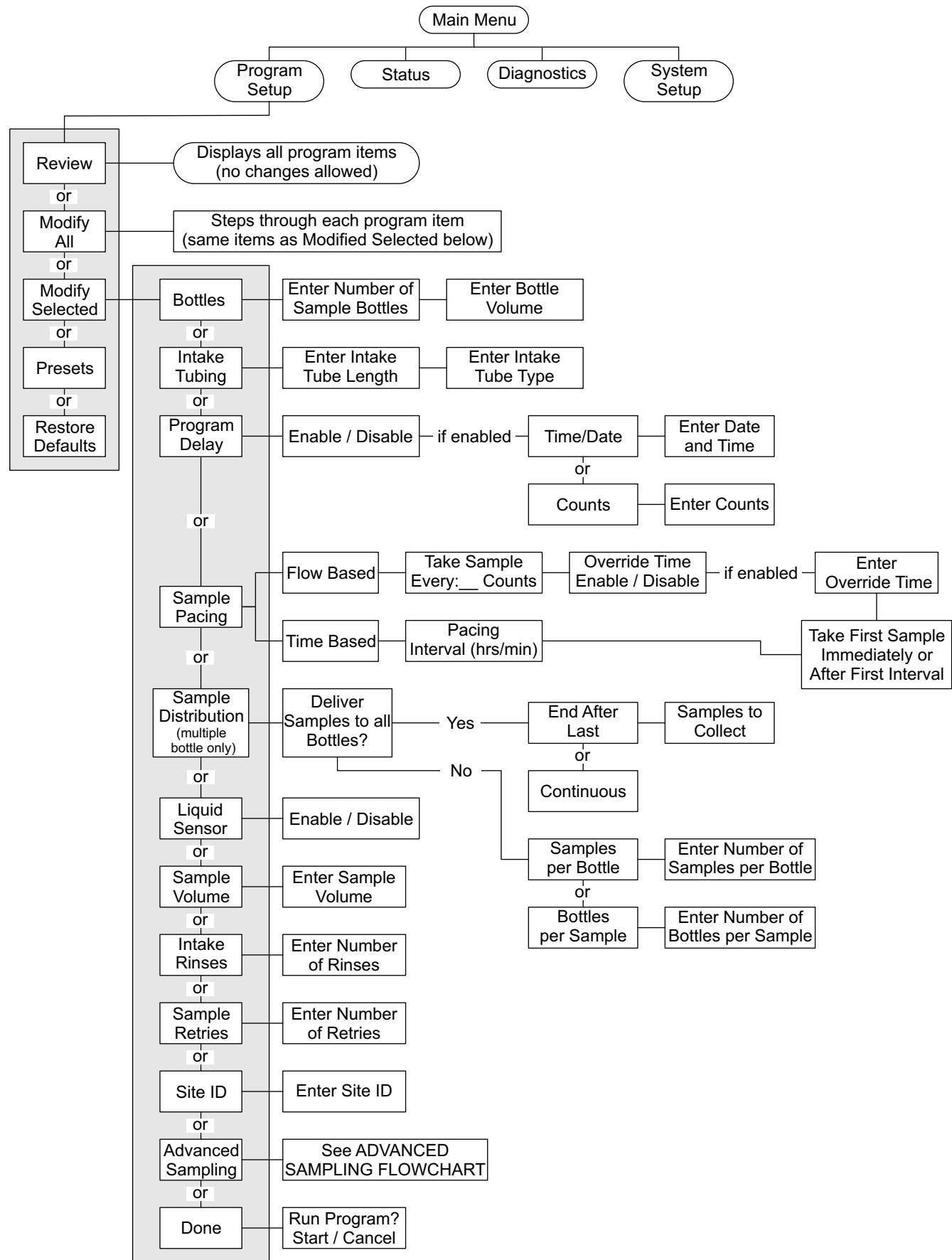
SD900 keypad

1 POWER: press to turn controller on or off	7 BACK: cancel or return to previous screen
2 VOLUME CALIBRATION: enter volume calibration menu	8 ARROW KEYS: moves cursor or scrolls through values
3 STOP: stops the pump or distributor if running	9 STATUS: displays current status of the sample program
4 LED: blinks when controller is powered	10 RUN/HALT PROGRAM: starts or stops a sample program
5 MENU: displays the main menu	11 MANUAL OPERATION: manual operation of pump and distributor
6 ENTER: selects the highlighted or entered value	

Main menu flow chart



Basic sampling menu flow chart



Advanced sampling menu flow chart

